

Table 6-1 PARTS LIST C-3470

SYMBOL NO.	PART NO.	DESCRIPTION	
DIODE & OTHERS			
D201D231D261	274P51601	DIODE	ISS145
D202D232D262	264P20901	"	RC-2
D208	264P19303	"	MZ305-B
D281	264P19601	"	RU-2
D401	264P19306	DIODE	MZ312-B
D402	264P04502	"	IS2076A
D403	264P04502	"	IS2076A
D501	264P04502	DIODE	IS2076A
D502	264P19601	"	RU-2
D503	264P19601	"	RU-2
D504	264P19601	"	RU-2
D505	264P19601	"	RU-2
D506	264P04702	"	IS2076A
D531	264P19303	DIODE	MZ305-B
D532	264P19601	"	RU-2
* D534	264P19601	"	RU-2
D535	264P15101	"	GL3AR1
D536	264P04502	"	IS2076A
D537	264P22004	"	MZ306-B
* D538	264P04502	"	IS2076A
* D539	264P22004	"	MZ306-B
* D541	264P04502	"	IS2076A
D901	264P14701	DIODE	RM-2C
D902	264P14701	"	RM-2C
D903	264P14701	"	RM-2C
D904	264P14701	"	RM-2C
D905	264P19601	"	RU-2
D906	264P19601	"	RU-2
D907	264P19601	"	RU-2

Table 6-1 PARTS LIST C-3470

SYMBOL NO.	PART NO.	DESCRIPTION	
CAPACITORS			
C201C231C261	155P31402	C-C	SL50V 330P-J
C202C232C262	181P26605	C-ELE	04W50V 10M
C203C233C263	142P02009	C-C	B50V 1000P-K
C204C234C264	172P08709	C-PP-P	630V0.01M-K
C205C235C265	180P04301	C-ELE	04W250V0.47M
C206C236C266	155P11006	C-C	SL500V5P-D
C-231	155P31308	"	SL50V 120P-J
C280	181P26100	C-ELE	04W10V100M
C281	181P26603	"	04W50V3.3M
C282	154P03106	C-C	YN2KV220P-K
C283	142P01402	"	E500V10000P-P
C284	181P26400	C-ELE	04W25V47M
C285	142P02308	C-C	F50V0.01M-Z
C286	181P26901	C-ELE	04W100V47M
C287	142P01402	C-C	E500V10000P-P
C288	180P04302	C-ELE	04W250V1M
C289	142P01402	C-C	E500V10000P-P
C401	172P01204	C-MF	50V0.022M-K
C402	172P01202	C-MF	50V0.01M-K
C403	142P02009	C-C	B50V1000P-K
C404	189D02808	C-TAN	25V3.3M-K
C405	189D02808	"	25V3.3M-K
C406	172P01202	C-MF	50V0.01M-K
C407	181P26401	C-ELE	04W25V100M
C408	142P01007	C-C	B500V330P-K
C409	181P26902	C-ELE	04W100V10M
C410	189D05807	C-TAN	35V22M-K
C411	185D02709	C-ELE	H100V680M-M
C412	181P26905	"	04W100V47M
C413	142P02009	C-C	B50V1000P-K
C-414	181P26602	C-ELE	04W50V2.2M

Table 6-1 PARTS LIST C-3470

SYMBOL NO.	PART NO.	DESCRIPTION	
CAPACITORS			
C415	181P26905	C-ELE	04W100V47M
C416	189D07507	C-TAN	35V10M-K
C417	181P26605	C-ELE	04W50V10M
C418	142P02007	C-C	B50V680P-K
C419	181P26005	C-ELE	04W6.4V470M
C420	172P01109	C-MF	50V332K
C421	172P01206	"	50V473K
C501	142P02308	C-C	F50V103Z
C502	181P26601	C-ELE	04W50V1M-M
C503	142P02107	C-C	B50V4700P-K
C504	142P01005	B500V221K	C-C
C505	172P01203	C-MF	50V0.015M-K
C506	181P26601	C-ELE	04W50V1M-M
C507	172P12100	C-MF	50V5600P-J
C508	181P26400	C-ELE	04W25V47M-M
C509	142P01007	C-C	B500V330P-K
C510	181P26401	C-ELE	04W25V100M-M
C511	189D51006	C-P-PP	1.2KV0.0082M-J
C513	180P04306	C-ELE	04W250V10M-M
C514	181P26401	"	04W25V100M-M
C515	181P26403	"	04W25V330M-M
C516	181P26400	"	04W25V47M-M
C517	189D007202	C-M-MF	200V0.68M-K
C518	189D07206	"	200V0.1M-K
C519	180P04306	C-ELE	04W250V10M-M
C520	142P01308	C-C	D500V0.01M-M
C521	142P02009	"	B50V1000P-K
C530	142P01101	C-C	B500V680-K
C531	189D07205	C-M-MF	200V6.8M-K

Table 6-1 PARTS LIST C-3470

SYMBOL NO.	PART NO.	DESCRIPTION	
CAPACITORS			
C532			
C533			
C534	189D51002	C-P-PP	1.2KV5600P-J
C535	172P01207	C-MF	50V 0.068
C536	181P26100	"	04W10V100M-M
C537	181P26605	"	04W50V10M-M
※ C538	181P26400	"	04W25V47M-M
C539	181P26308	C-ELE	04W25V22M-M
C540	181P26101	"	04W10V220M-M
C541	181P26400	"	04W25V47M-M
C542	172P01109	C-MF	50V332-K
※ C544	181P26603	C-ELE	50V3.3M-M
C545			
C546	142P01103	C-C	B500V1000P-K
C904	154P03202	C-C	B1KV1000P-K
C905	154P03202	"	B1KV1000P-K
C906	154P03202	"	B1KV1000P-K
C907	189D51901	C-M-P	250V2200P-K
C908	189D51901	"	"
C909	185D04803	C-ELE	04W200V470M
C910	185D04803	"	04W200V470M
C911	181P26906	"	04W100V100M
C912	172P08803	C-P-PP	630V2200P-J
C913	172P08803	"	630V2200P-J
C914	181P26809	C-ELE	04W100V2.2M
C915	181P26601	"	04W50V1M

Table 6-1 PARTS LIST C-3470

[illegible]

Table 6-1 PARTS LIST C-3470

SYMBOL NO.	PART NO.	DESCRIPTION	
RESISTORS			
R201R231R261	103P32201	R-C-25	1/4W 470-J
R202R232R262	103P32104	"	1/4W 120-J
R203R233R263	103P32005	"	1/4W 22-J
R204R234R264	103P32301	"	1/4W 3.3K-J
R205R235R265	103C05203	R-METAL	3W 1.5K-J
R206R236R266	103P32103	R-C-25	1/4W 100-J
R207R237R267	103P32103	"	1/4W 100-J
R208R238R268	103P32401	"	1/4W 22K-J
R209R239R269	103P32508	"	1/4W 560K-J
R210R240R270	101P68103	R-COMP	1/2W 680-J
R233	103P32104	R-C-25	1/4W 120-J
R280	103C07104	R-M	2W 120-J
R281	103P32206	R-C-25	1/4W 1.2K-J
R282	103P32406	"	1/4W 56K-J
R283	109C51507	R-C	1/2W 220K-J
R284	101P56503	R-COMP	1/2W 5.6M-J
R401	103P32303	R-C-25	1/4W 4.7K-J
R402			
R403	103P32303	"	1/4W 4.7K-J
R404	103P32305	"	1/4W 6.8K-J
R405	103P32205	"	1/4W 1 K-J
R406	103P32203	"	1/4W 680-J
R407	103P32303	"	1/4W 4.7K-J
R408	103P32401	"	1/4W 22K-J
R409	103P32400	"	1/4W 18K-J
R410	109C51004	R-C	1/2W 8.2-J
R411	109C51004	"	1/2W 8.2-J
R412	103P32307	R-C-25	1/4W 10K-J
R413	103P32308	"	1/4W 12K-J
R414	109C51202	R-C	1/2W 270-J
E415	109C51303	"	1/2W 2.2K-J

Table 6-1 PARTS LIST C-3470

SYMBOL NO.	PART NO.	DESCRIPTION	
RESISTORS			
R416	109C51303	R-C	1/2W 2.2K-J
R417	109C51007	"	1/2W 15-J
R418	109C51005	"	1/2W 10-J
R419	103P32307	R-C-25	1/4W 10K-J
R420	103P32400	"	1/4W 18K-J
R421	102P08306	R-CEMENT	10W 150-K
R422	109C51206	R-C	1/2W 560-J
R423	103P32009	R-C-25	1/4W 47-J
R424	103P32100	"	1/4W 56-J
R425	103P32209	"	1/4W 2.2K-J
R426	103P32205	"	1/4W 1K-J
R427	103P32408	"	1/4W 82K-J
R428	103P32403	"	1/4W 33K-J
R429	103P32303	"	1/4W 4.7K-J
R430	103P32303	"	1/4W 4.7K-J
R431	103P32107	"	1/4W 220-J
R432	103P32305	"	1/4W 6.8K-J
R433	109C51108	R-C	1/2W 120-J
R434	103C07308	R-METAL	2W 1.8K-J
R501	103P32303	R-C-25	1/4W 4.7K-J
R502	103P32202	"	1/4W 560-J
R503	103P32303	"	1/4W 4.7K-J
R504	103P32304	"	1/4W 5.6K-J
R505	103P32204	"	1/4W 820-J
R506	109C51405	R-C	1/2W 22K-J
R507	103P32403	R-C-25	1/4W 33K-J
R508	103P32105	"	1/4W 150-J
R509	103P32305	"	1/4W 6.8K-J
R510	103C05301	R-METAL	3W 6.8K-J
R511	103P32205	R-C-25	1/4W 1K-J
R512	103P32201	"	1/4W 470-J

Table 6-1 PARTS LIST C-3470

SYMBOL NO.	PART NO.	DESCRIPTION	
RESISTORS			
R513	103C07208	R-METAL	2W 1.8K-J
R514	103P32406	R-C-25	1/4W 56K-J
R515	103P32007	"	1/4W 33-J
R516	109P01307	R-FUSE	1/2W 4.7-K
R517	102P03303	R-W-P	2W 1-K
R518	109P01305	R-FUSE	1/2W 1.2-K
R519	109P01307	"	1/2W 4.7-K
R520	102P03303	R-W-P	2W 1-K
R521	109C51005	R-C	1/2W 10-J
R522	109C51005	"	1/2W 10-J
R523	109C51202	"	1/2W 270-J
R524	101P10003	R-COMP	1/2W 10-J
R530	103P32209	R-C-25	1/4W 2.2K-J
R531	103P32205	"	1/4W 1K-J
R532	103P32201	"	1/4W 470-J
R533	103C07302	R-METAL	2W 3.9K-J
R534	103P32309	R-C-25	1/4W 15K-J
R535	109C51502	R-C	1/2W 82K-J
R536	103P32205	R-C-25	1/4W 1K-J
R537	103P31503	"	1/4W 220K
R538	103P322205	"	1/4W 1K-J
* R539	109P01305	R-FUSE	1/2W 1.2-K
R540	103P32204	"	1/4W 820-J
R541	103P32307	"	1/4W 10K-J
R542	103P32402	R-C-25	1/4W 27K-J
R543	103P32601	"	1/4W 1M-J
R544	103P32301	"	1/4W 3.3K-J
R545	103P32205	"	1/4W 1K-J
R546	103P32302	"	1/4W 4.7K-J
R547	103P32203	"	1/4W 680-J
R548	103P32205	"	1/4W 1K-J

Table 6-1 PARTS LIST C-3470

SYMBOL NO.	PART NO.	DESCRIPTION	
RESISTORS			
R549	103P32205	R-C-25	1/4W 1K-J
R550			
R551	103P32303	"	1/4W 4.7K-J
R552	103P32500	"	1/4W 120K-J
R553	103P32205	R-C-25	1/4W 1K-J
R554	103P30305	R-METAL	1/4W 2.7K-F
R555	103P30205	"	1/4W 1K-F
R556			
R557	103P32405	R-C-25	1/4W 47K-J
* R558	103P32209	R-C-25	1/4W 2.2K-J
* R559	103P32309	"	1/4W 15K-J
* R560	103P32309	"	1/4W 15K-J
* R561	103P30305	R-METAL	1/4W 6.8K-F
R562	109C51101	R-C	1/2W 33-J
R591	101P331E3	R-COMP	1/2W 330K
R901	109D50603	R-CEMENT-W	3W 100-K
R902	109D50604	"	3W 330-K
R903	109D50201	"	10W 4.7
R904	101P15403	R-COMP	1/2W 150K-J
R905	101P15403	"	1/2W 150K-J
R906	103C07403	R-METAL	2W 33K-J
R907	103C07403	"	2W 33K-J
R908	109C03104	"	3W 120K-J
R909	103D08205	"	1W 1K-J
R910	109C51206	R-C	1/2W 560-J
R911	103D11208	R-M	4W 3.9K-J
R912	109C51307	R-C	1/2W 4.7K-J
R913	103D08205	R-M	1W 1K-J
R914	103P32202	R-C-25	1/4W 560-J
R915	103P32406	"	1/4W 56K-J
R916	101P22503	R-COMP	1/2W 2.2M-J
R917	103P32209	R-C-25	1/4W 2.2K-J

Table 6-1 PARTS LIST C-3470

SYMBOL NO.	PART NO.	DESCRIPTION	
RESISTORS			
R918	103P32302	R-C-25	1/4W 3.9K-J
R919	103P32103	"	1/4W 100-J
R920	103P32300	"	1/4W 2.7K-J
R921	103P32303	"	1/4W 4.7K-J
R922	103P32302	"	1/4W 3.9K-J
R923	103D08203	R-METAL	1W 680-J
R924	103P32103	R-C-25	1/4W 100-J
R925	103P32400	"	1/4W 18K-J
R926	103P32204	"	1/4W 1.2K-J
R927			
R928	103P32403	"	1/4W 33K-J
R929	103P32301	"	1/4W 3.3K-J
R930	103P32209	"	1/4W 2.2K-J
R931	103P32301	"	1/4W 3.3K-J
R932	103P32305	"	1/4W 6.8K-J
R933	103D08200	R-METAL	1W 390-J
R934	103D08106	"	1W 180-J
R935	109C51102	R-C	1/2W 39-J
R936	102P03302	R-W-P	2W 2.2-J
R937	103P32209	R-C-25	1/4W 2.2K-J
R938	103P32205	"	1/4W 1K-J
R939	102P03208	R-W-P	2W 0.68-K
R940	102P03208	"	2W 0.68-K
R941	109C51408	R-C	1/2W 39K-J
R942	103P32301	R-C-25	1/4W 3.3K-J
R943	109C51405	R-C	1/2W 22K-J
R944	101P22503	R-COMP	1/2W 2.2M-J
R564	103P32409	R-C-25	1 4W 100K-J
R565			

Table 6-1 PARTS LIST C-3470

SYMBOL NO.	PART NO.	DESCRIPTION	
VARIABLE RESISTORS			
VR201 VR231	129D07305	Semifixed	1/2W B-1K
VR261	"	"	"
VR202 VR232	129D05906	"	"
VR262	"	"	"
VR401	129C03502	Semifixed	1/2W B-200
VR402	129C03603	"	1/2W B-50K
VR403	129C03508	"	1/2W B-5K
VR404	129C03506	"	1/2W N-2K
VR405	129C03508	"	1/2W B-5K
VR406	129C03506	"	1/2W B-2K
VR501	129C02603	Semifixed	1/2W B-50K
VR502	129C03508	"	1/2W B-5K
VR503	129D50501	"	1.4W 120
VR530	129C03608	Semifixed	1/2W B-1M
* VR531	129C50802	"	1/2W B-20K
* VR532	129C50802	"	1/2W B-20K
VR591	129C50505	VR-STD	
VR901	129C05004	Semifixed	1/2W B-1K

Table 6-1 PARTS LIST C-3470

SYMBOL NO.	PART NO.	DESCRIPTION	
MISCELLANEOUS			
AG201 AG231	224D01901	AIR-GAP	
AG261		"	
AG281	224D01901	"	
PR901	275P50401	POSISTOR	PTH451B02BG8ROH140
PR902	275P50402	"	PTH451B01GB360M270
		T927B44401	ASSY-PCB-CRT
		T927B45501	ASSY-PCB-MAIN
		T927B45601	ASSY-PCB-POWER
		T927C34701	ASSY-RADIATOR-D
		T927C34801	ASSY-PCB-TR
F 901	283D02006	FUSE-UL	S-5A
"	(283D02005)	"	(S-3A)

SECTION 7

MECHANICAL PARTS LIST

MODEL: C-3470

The complete mechanical drawings for the C-3470 monitor is contained in six sections.

Fig.7-1 Assy-Radiator-D
Fig.7-2 Assy-PCB-Power
Fig.7-3 Assy-Power-Unit
Fig.7-4 Assy-PCB-CRT
Fig.7-5 Assy-PCB-Main
Fig.7-6 Assy-Display

FIGURE AND INDEX NUMBERS

Items in this section are referenced by figure and index numbers to the illustrations which appear on the mechanical drawings.

INDENTATION SYSTEM

This mechanical parts list is indented to indicate item relationships. Following is an example of the indentation system used in the Description column.

Assembly and/or Component
 Detail Part of Assembly and/or Component
 mounting hardware for Detail Part
 Parts of Detail Part
 mounting hardware for Parts of Detail Part
 mounting hardware for Assembly and/or Component

Mounting hardware always appears in the same indentation as the item it mounts, while the detail parts are indented to the right. Indented items are part of, and included with, the next higher indentation.

Mounting hardware must be purchased separately, unless otherwise specified.

PARTS ORDERING INFORMATION

Replacement parts are available from or through Mitsubishi Electronics America, Inc.

Changes to monitors are sometimes made to accommodate improved components as they become available, and to give you the benefit of the latest circuit improvements developed in our engineering department. It is therefore important, when ordering parts, to include the following information in your order: Part number, instrument type or number, serial or model number, and modification number if applicable.

If a part you have ordered has been replaced with a new or improved part, Mitsubishi Electronics America, Inc. will contact you concerning any change in part number.

Change information, if any, is located at the rear of this manual.

Table 7-1 Assy-Radiator-D

[illegible]

Table 7-2 Assy-PCB-Power

[illegible]

Table 7-3 Assy-Power-Unit

[illegible]

Table 7-4 Assy-PCB-CRT

[illegible]

Table 7-5 Assy-PCB-Main

FIG & INDEX NO.	PART NO.	DESCRIPTION	Q'TY
7-5-11	927B46601	ASSY-PCB-MAIN-J	1
7-5-15	927C34701	ASSY-RADIATOR-D	1
7-5-17	599C18601	FRAME-L	1
7-5-18	599C18401	FRAME-FRONT	1
7-5-19	599C18501	FRAME-REAR	1
7-5-20	599D30501	BRACKET-FOCUS	1
7-5-23	452D05408	CONNECTOR-MALE	3
7-5-24	452D05409	"	3
7-5-25	452D05402	"	2
7-5-26	452D05404	"	1
7-5-27	452D05406	"	1
7-5-28	450D03601	PIN-BOARD	2
7-5-29	450D03603	"	1
7-5-31	452D03101	PIN-GT	4
7-5-33	242D22605	LEAD-CONNECTOR	1
7-5-34	249C22402	"	1
7-5-35	249C22901	"	1
7-5-36	081H15202	SILICON-WIRE-UL	1
7-5-37	081H18202	"	1
7-5-38	081H22202	"	1
7-5-39	111H34101	PVC-UL	1
7-5-40	669D07707	TAP-SCREW-F-PAN	11
7-5-41	650P30008	SCREW-F-FE-PAN	6
7-5-42	650P30006	SCREW-F-FE-PAN	2
7-5-47	599D31801	STOPPER	2
7-5-49	669D10706	TAP SCREW	2
7-5-50	599D33301	SPACER-FBT	1
7-5-57	641D34302	BAND	2
7-5-58	540D07402	LEAD-CLAMPER	2

Table 7-6 1/2 ASSY DISPLAY

FIG & INDEX NO.	PART NO.	DESCRIPTION	Q'TY
7-6-11	599A10801	FRAME BASE	1
7-6-12	599B09301	BRACKET-CRT	1
7-6-13	599B09302	BRACKET-CRT	1
7-6-14	599C08901	HOLDER-CRT	2
7-6-16	599D32301	BRACKET	1
7-6-17	630D18401	SPACER	2
7-6-23	927B45502	ASSY-PCB-MAIN	1
7-6-24	947B35502	ASSY-POWER-UNIT	1
7-6-25	927C36701	ASSY-TERMINAL	1
7-6-26	927B44402	ASSY-PCB-CRT	1
7-6-28	927C26901	ASSY-EARTH-WIRE	1
7-6-29	409C05203	COIL-DEGAUSSING	1
7-6-36		CRT	1
7-6-44	771D03904	PAD	4
7-6-45	539D53401	INSULATOR	1
7-6-47	249C23401	LEAD-CONNECTOR	1
7-6-48	249C22701	"	1
7-6-50	669D17105	SCREW-SEMS-W	11
7-6-51	650D40106	SCREW-F-FE-PAN	4
7-6-52	669D10403	SCREW	7
7-6-53	652P40008	SCREW-F-FE-TRUSS	8
7-6-54	650P30008	SCREW-F-FE-PAN	
7-6-58	683D01206	WASHER	8
7-6-59	683D01503	WASHER-TOOTHED	4
7-6-60	670P15001	NUT-HEX	4
7-6-65	641D34302	BAND	11
7-6-66	640D31702	CLAMPER	4
7-6-67	540D09001	CLAMPERS	7
7-6-68	540D07901	LEAD-CLAMPER	1
7-6-70	095Y51302	SOFT-TAPE	1
7-6-73	854B03200	NAME-PLATE	1
7-6-74	853D03601	LABEL	1

Table 7-6 2/2 ASSY DISPLAY

[illegible]

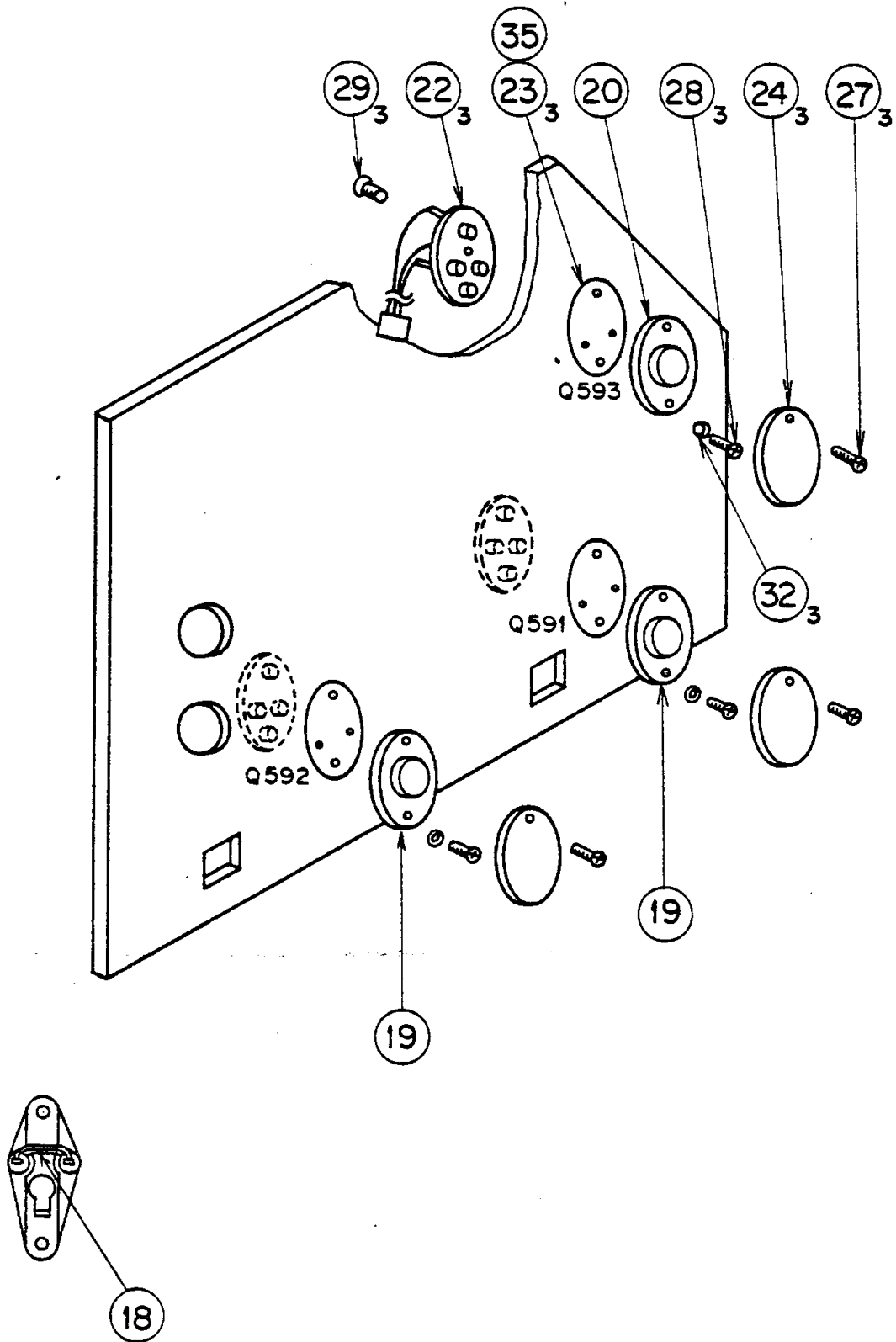


Fig. 7-1
Assy-Radiator-D

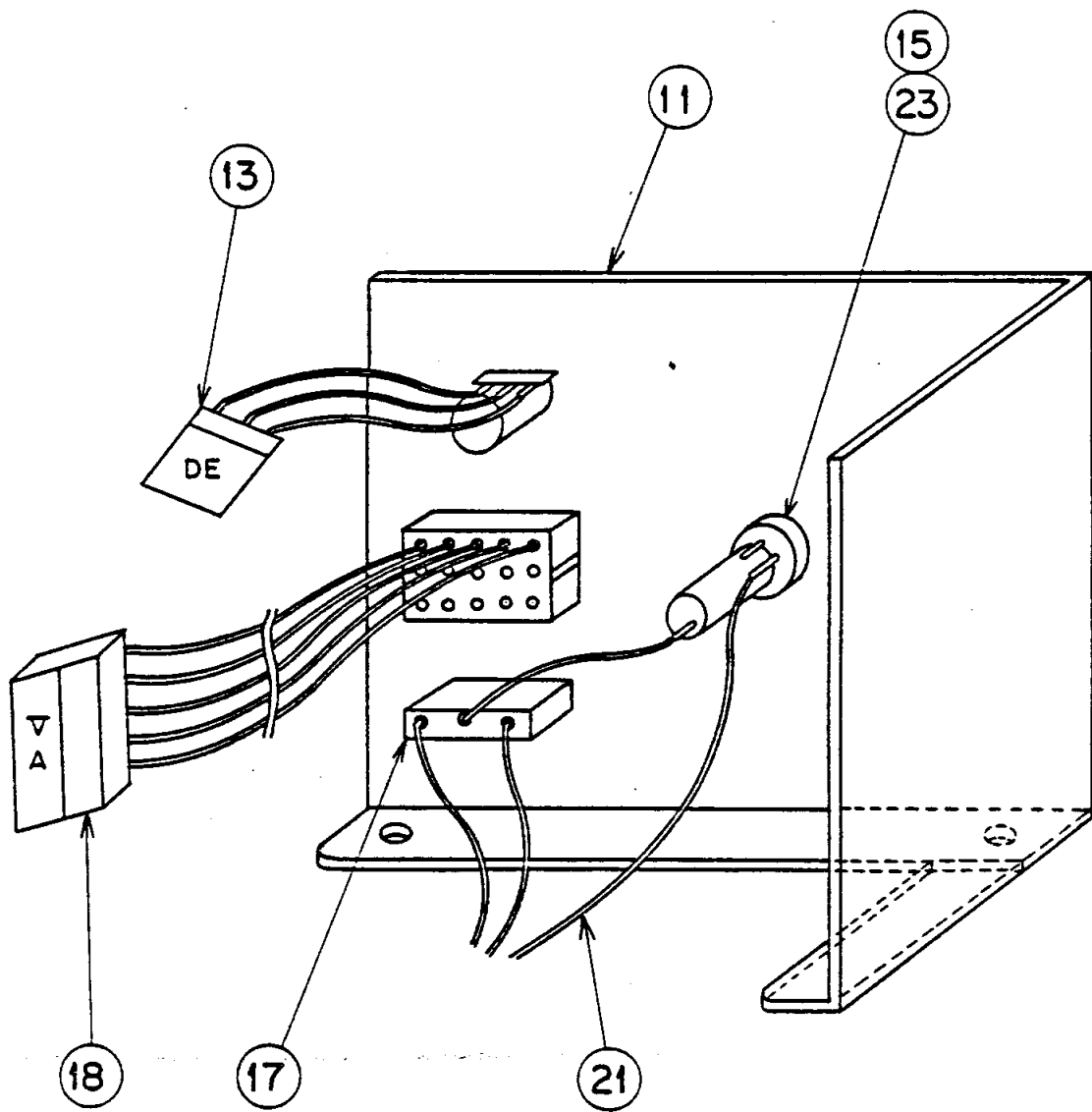
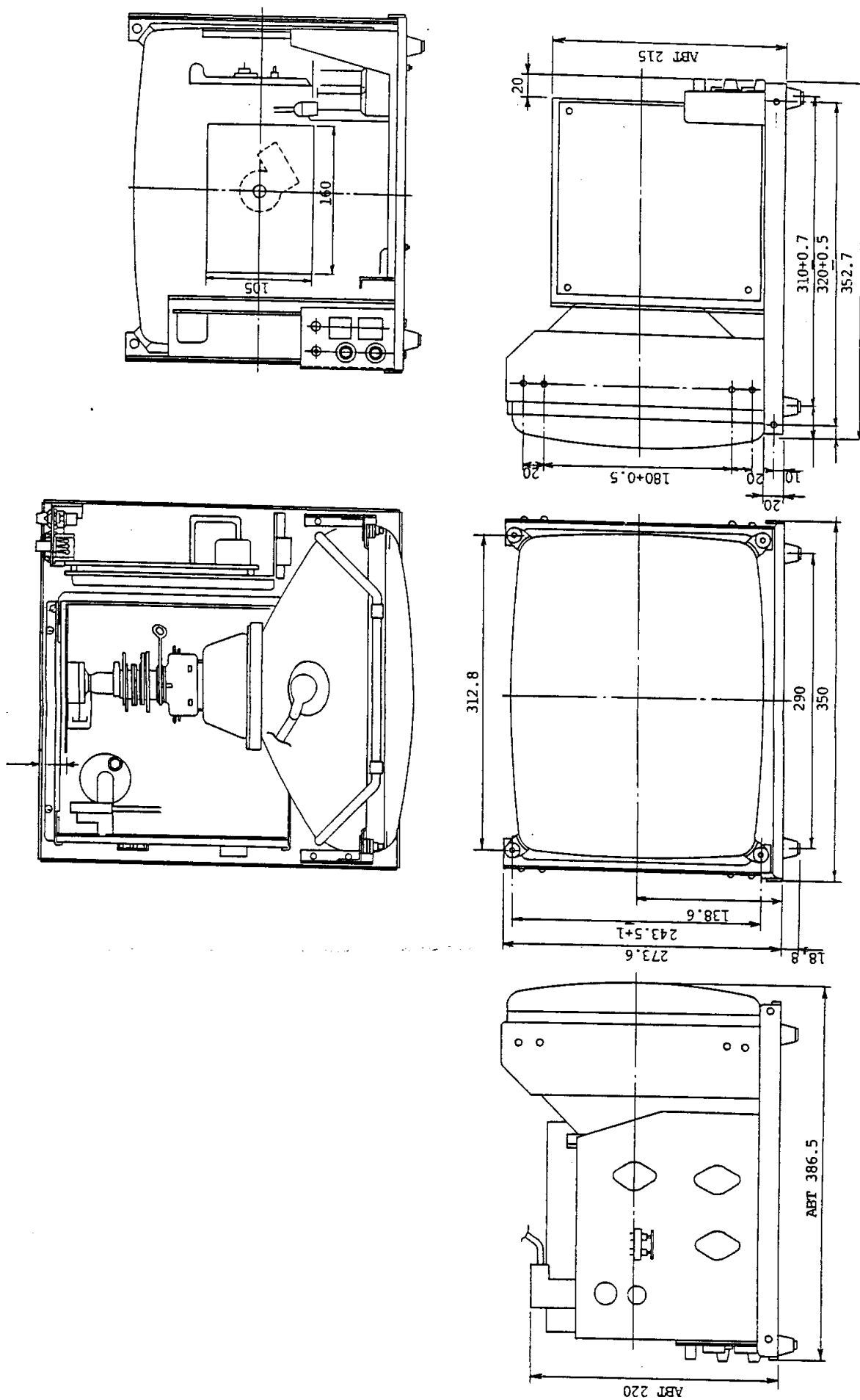


Fig. 7-7

Fig. 1-1
Configuration, color
Monitor Model C-3470



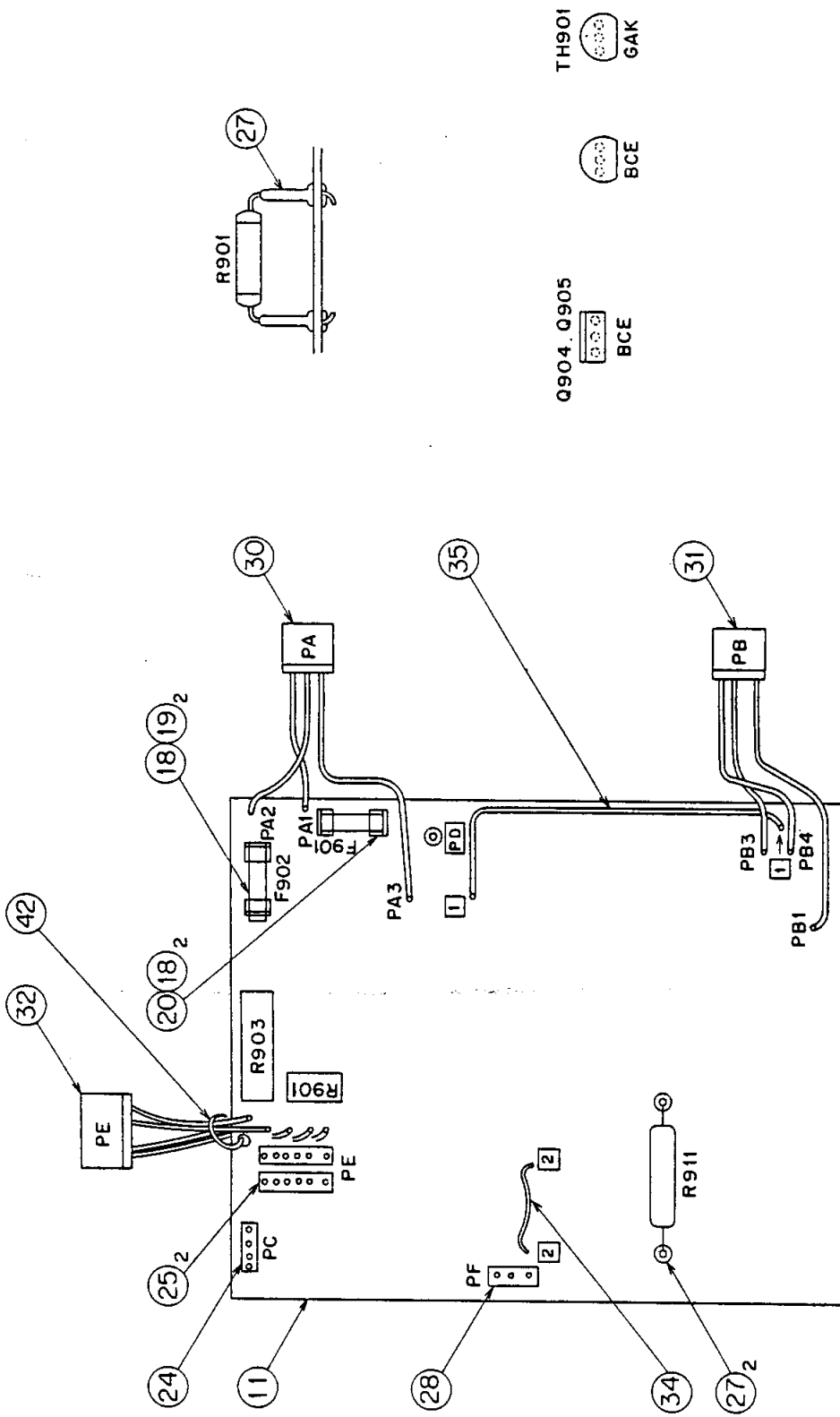


Fig. 7-2
Assy-PCB-Power

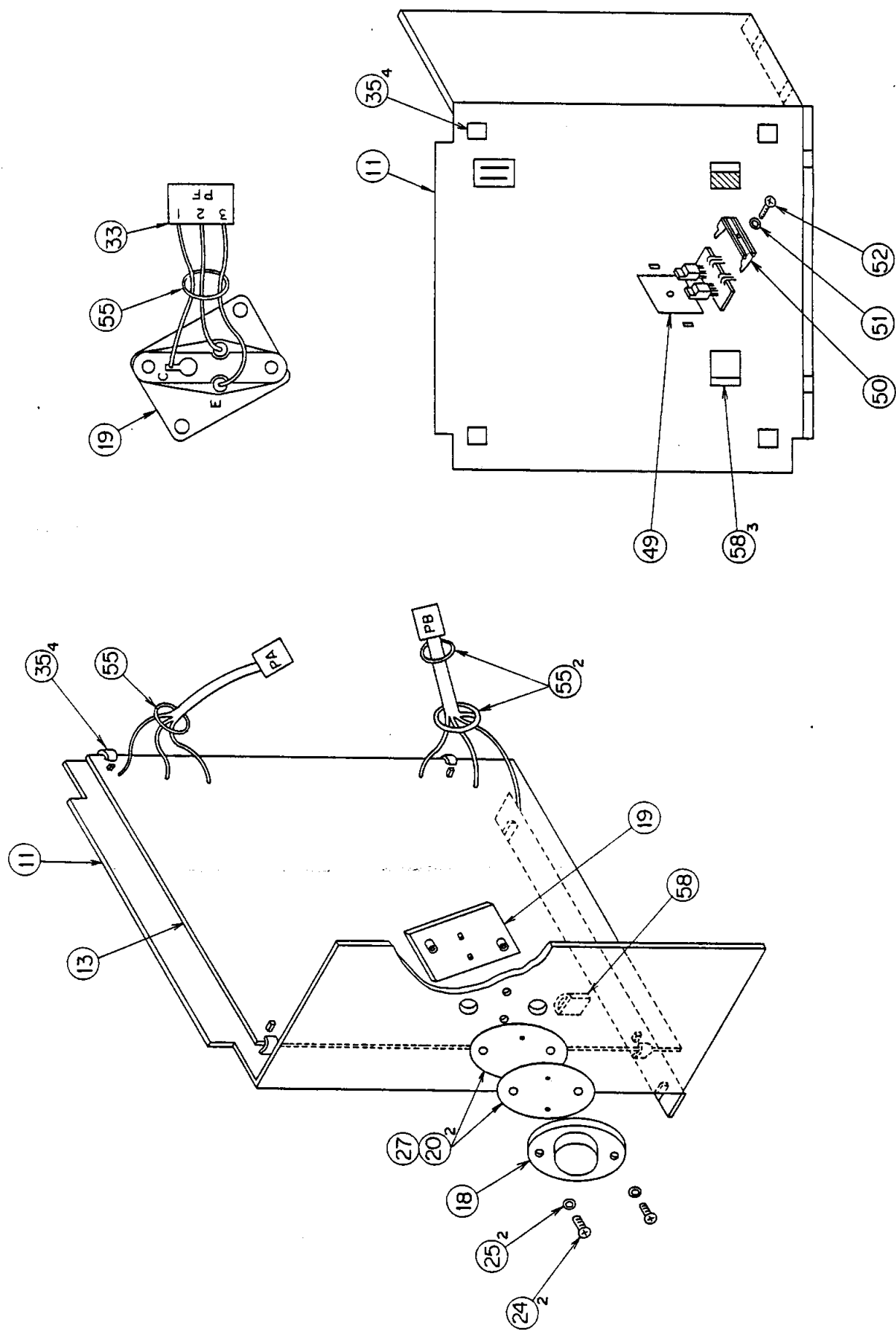
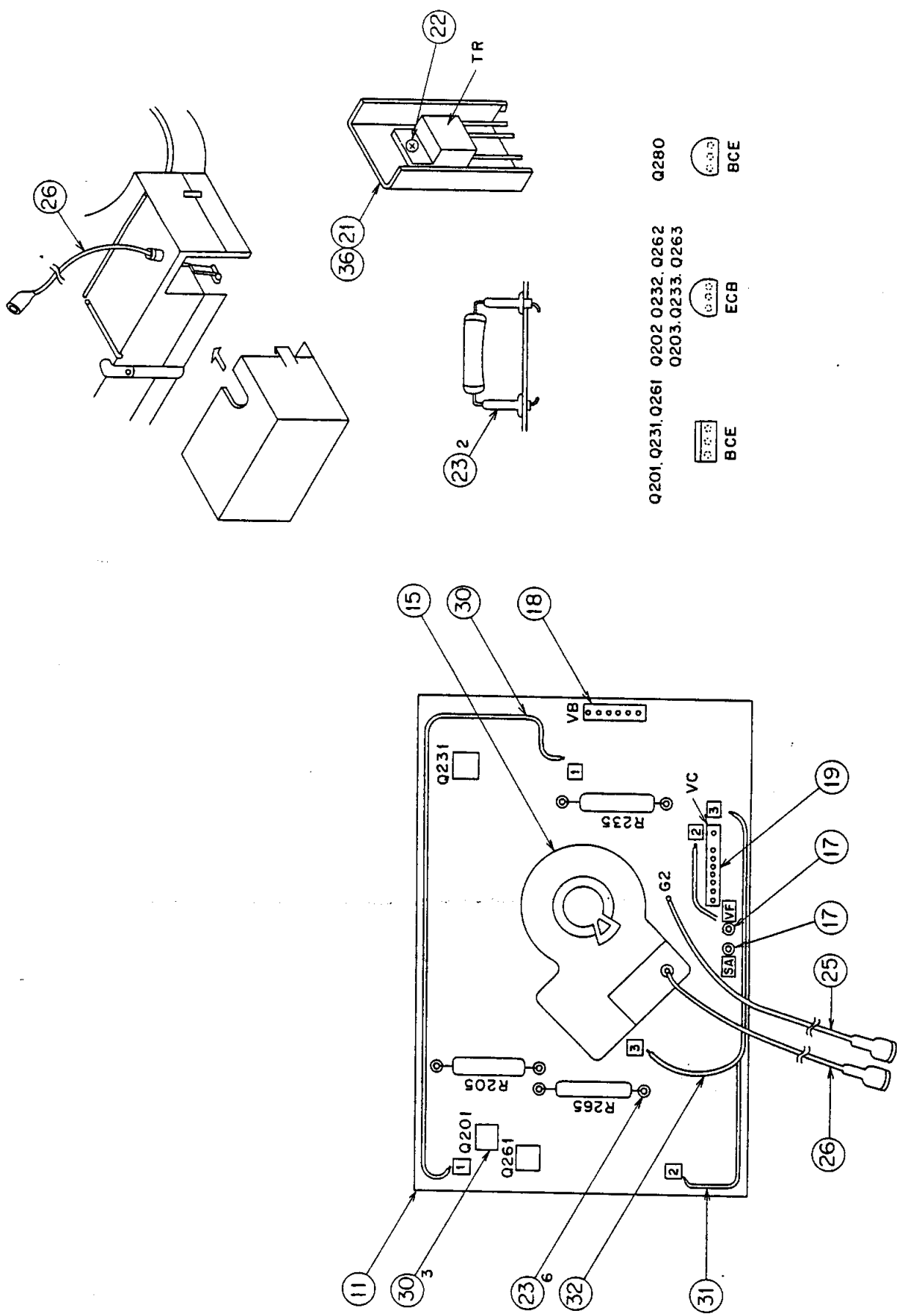
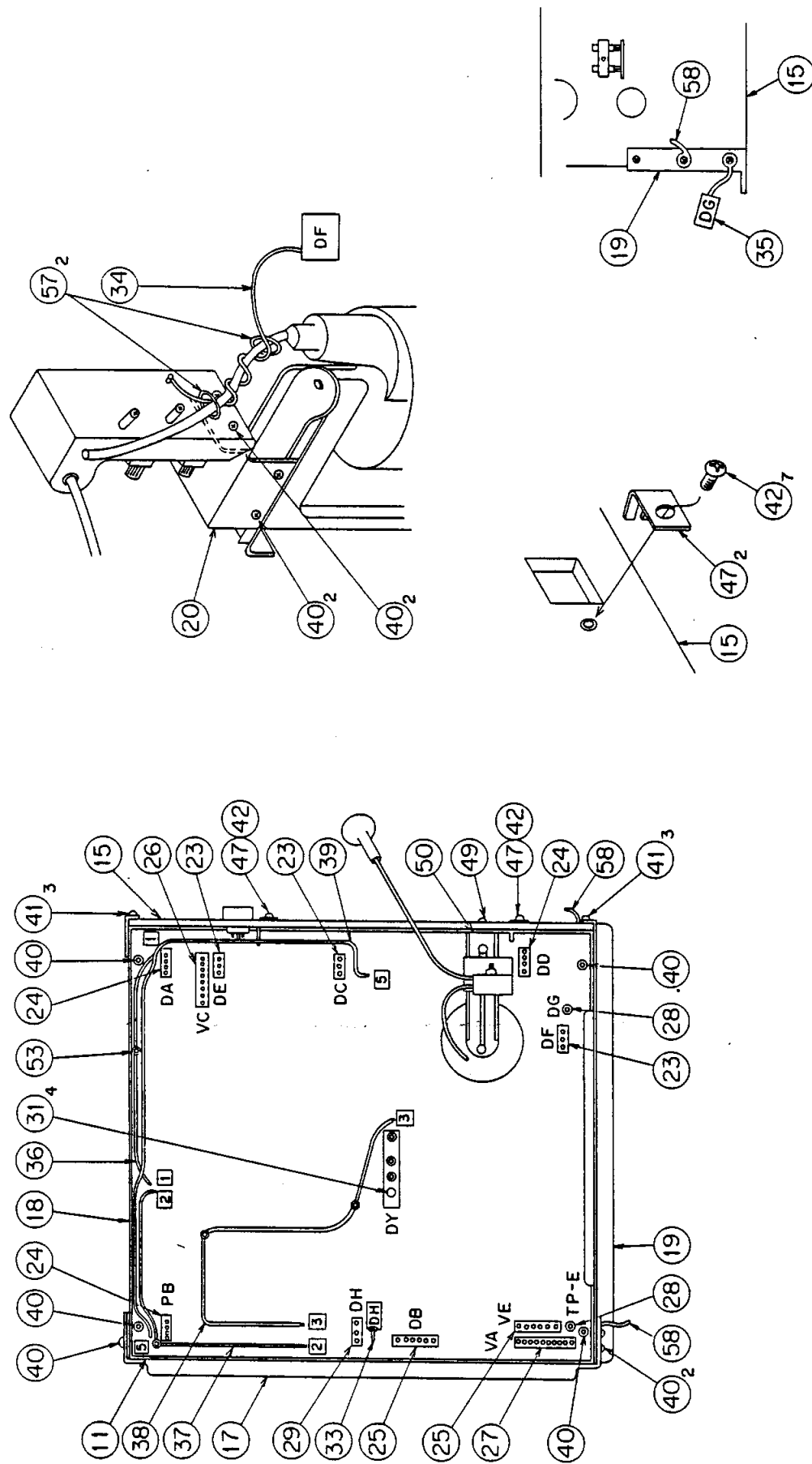


Fig. 7-3
Assy-Power-Unit

Fig. 7-4
Assy-PCB-CRT





Q502.Q531
Q532.Q537



Q403.Q533

Fig. 7-5
Assy-PCB-Main

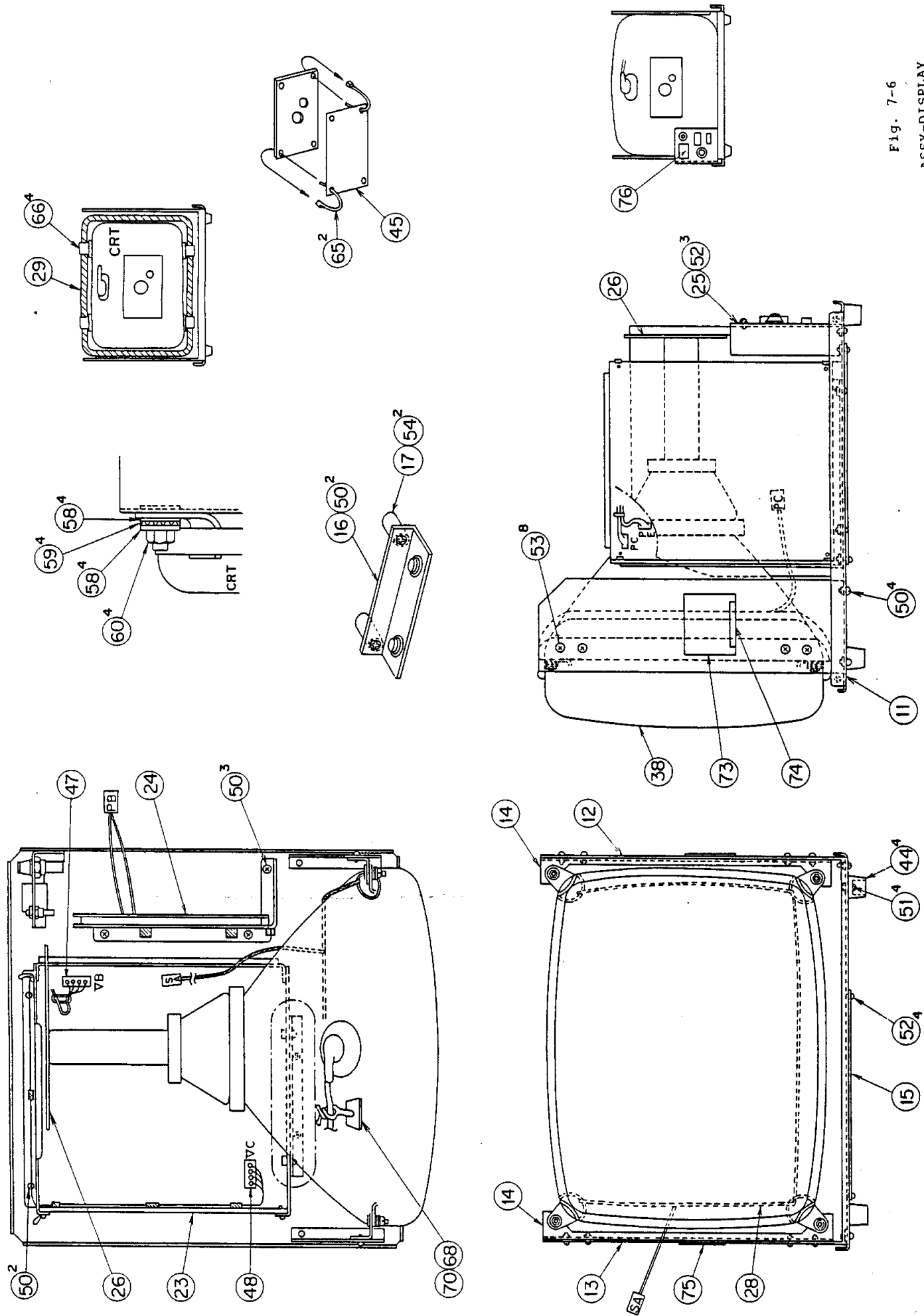
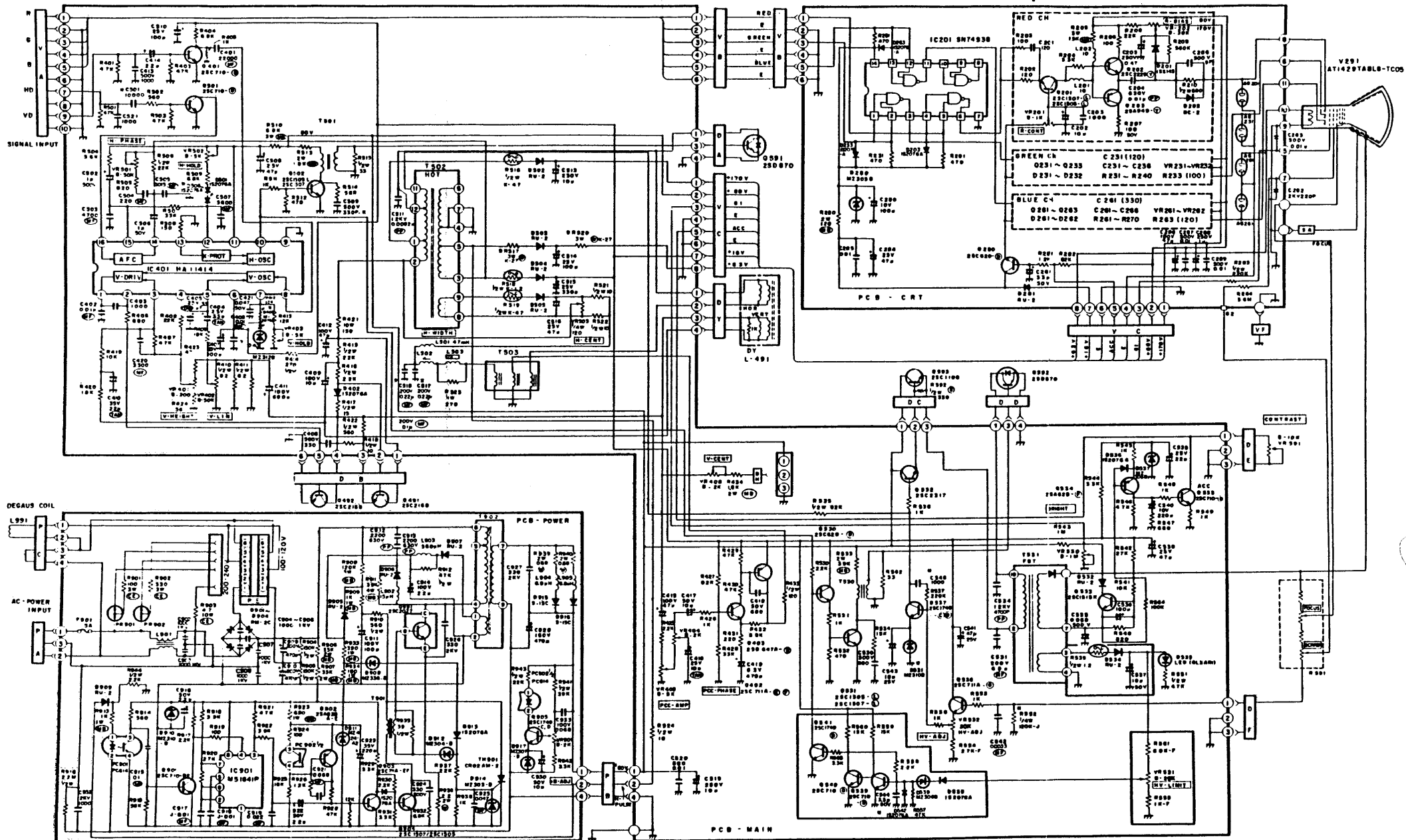


Fig. 7-6
ASSY-DISPLAY



NOTICE
The elements which marked "B" are
changed by Horizontal Frequency

* NOTE: This schematic is based on chassis labeled
"M", "I", "J"
C501: 1000P; "B"~"C" label and no label. 10000P; "W" label
C544: 0.47MF; "B"~"C" label and no label. 3.3MF; "T" label
C548: 470P; No label. 1000P~220K(833); "C"~"L" label
D531: M23058; No label. M23108; "B" label
D532: None; No label. 1S2074A; "B" label
D533: 82K; No label. 100K; "B" label
D534: None; No label. 1S2074A; "B" label

Schematic Diagram Model C-3470
Color Display Monitor